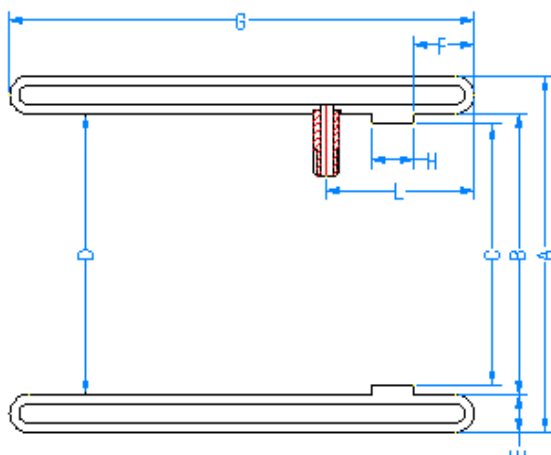


## Tire Assembly Machine Parts



### M-11 TURN-UP BLADDER

Mono ply Kevlar Construction

PART CODE	DESCRIPTION		O D "A"	NOSE ID "B"	BEA D ID "C"	REA RID "D"	THIC K "E"	NOSE LENGT H "F"	BEAD WIDT H "H"	VALV E LOC. "L"	OVERAL L LENGTH "G"	VALVE
TTB												
M110802	M110801 with TR220A Valve	inch	7.25	6.53	5.98	6.19	0.36	0.75	0.49	1.77	7.28	TR220A
		mm	184.2	165.8	151.8	157.2	9.2	19.2	12.5	45	185	
M110803	M110801 with TR220A Valve	inch	7.25	6.53	5.98	6.19	0.36	0.75	0.49	1.77	7.28	TR87S
		mm	184.2	165.8	151.8	157.2	9.2	19.2	12.5	45	220	
M110901	9" M-11 Heavy Duty	inch	8.39	7.59	7.17	7.48	0.39	0.85	0.41	1.77	8.66	TR87S
		mm	213.2	192.7	182.2	190.1	10	21.5	10.5	45	220	
M111001	10" M-11 Heavy Duty	inch	9.35	8.59	8.15	8.5	0.39	0.85	0.51	1.77	8.66	TR87S
		mm	237.5	218.1	207.5	215.6	10	21.5	13	45	220	
M111401	14" M-11 Heavy Duty	inch	12.89	12.29	12.04	12.29	0.39	0.85	0.49	1.77	8.66~9.06	TR220A
		mm	327.4	312.1	305.7	312.1	10	21.5	12.5	45	220~230	